

Corporate Chief Resilience Officers (CCRO) network & the Resilience Maturity Assessment (REMA) tool

Risk-!n

12 May 2025

Dr. Abhilash Panda & Laurent Giezendanner



UNDRR

UN Office for Disaster Risk Reduction

SENDAI FRAMEWORK

FOR DISASTER RISK REDUCTION 2015-2030

Content

- Resilience in Context
- UNDRR Chief Resilience Officers (CCRO) Network
- Resilience Maturity Assessment (REMA) Tool
- Opportunities for collaboration



THERE is **NO** such thing as **NATURAL DISASTER**

- We make **choices** as to where we inhabit and how we build
- What turns a natural hazard into a disaster is often **the consequence of human decisions** that increase our vulnerability and exposure to risk





Not only increased **frequency** but also **intensity and duration** of weather-related events

The world has experienced

350-500

medium-to-large-scale
disasters per year over the
last 20 years.

This is

5 times higher

than the previous three decades.



Disaster Impacts

1980-1999 VS 2000-2023

US\$ lost

1.99
trillion

4.59
trillion

people affected

3.20
billion

4.65
billion

deaths

1.47
million

1.77
million

disasters

7,699

15,668

1980-1999

2000-2023

Our **vision**

A world
where disasters
no longer threaten
the well-being of people
and the future of the planet

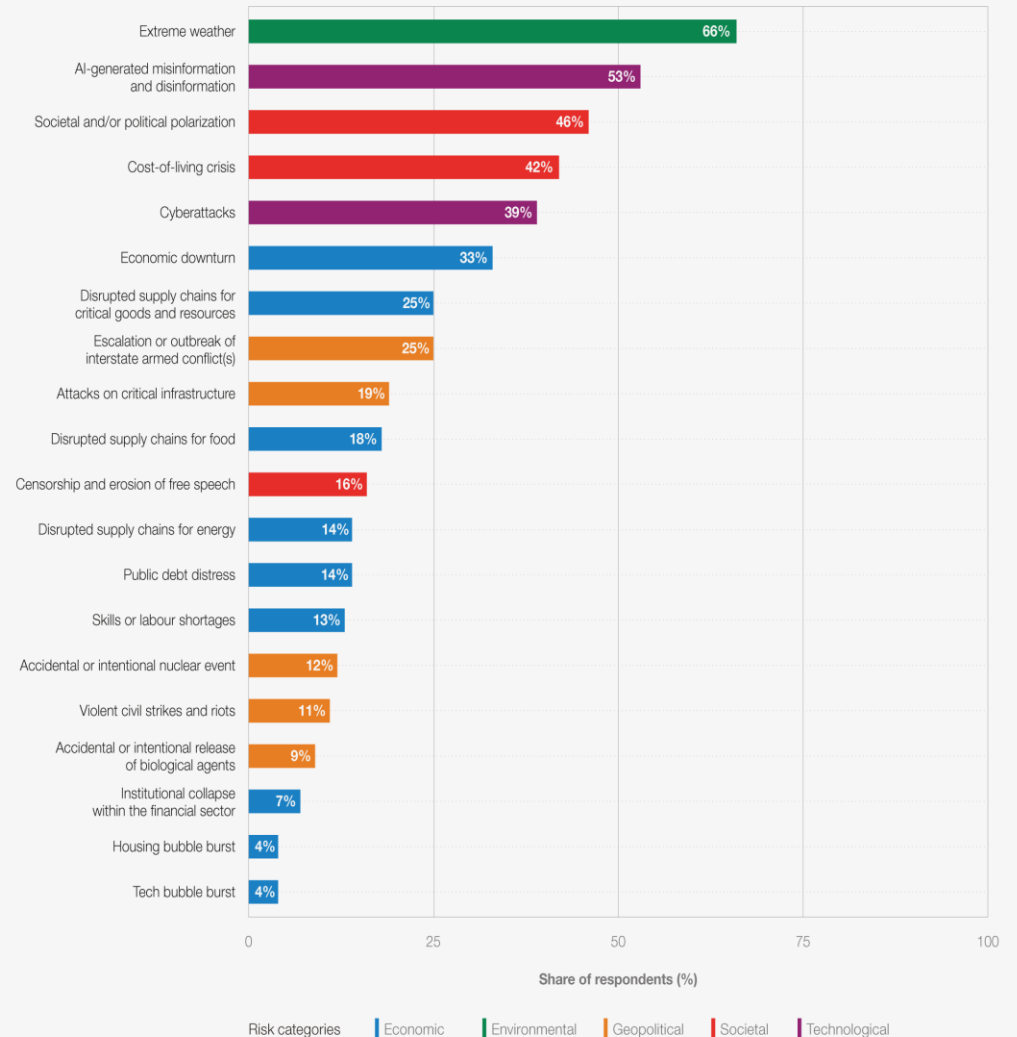


Risk landscape (Perception)

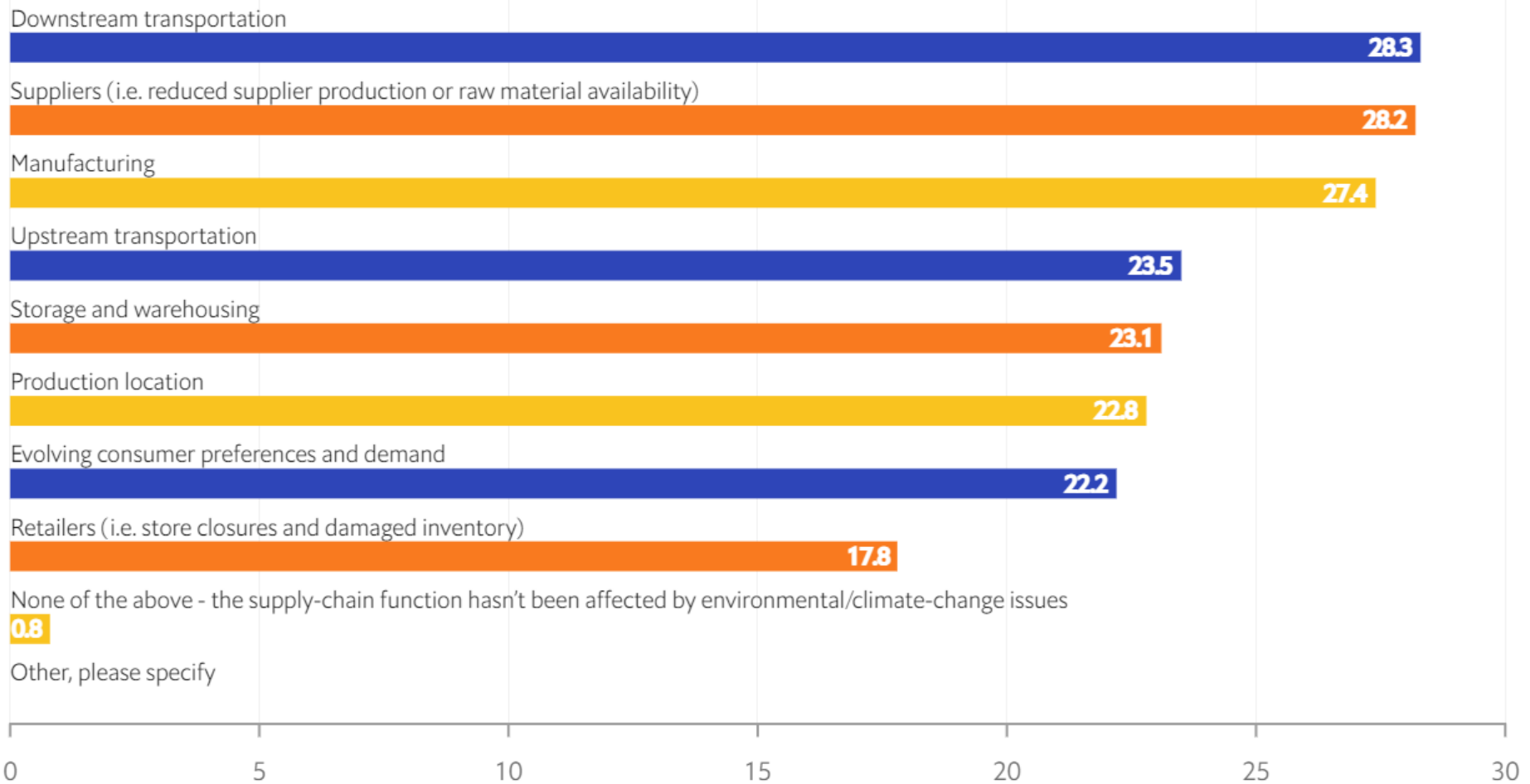
- 2022 flooding in central China **disrupted supply chains** for commodities -> closure of a Nissan plant
- 2021 hurricane Ida, one of the costliest in U.S. **damaged key industrial sites** producing plastics and pharmaceuticals, and redirecting trucks, already scarce, for relief efforts

FIGURE 1.2 Current risk landscape

"Please select up to five risks that you believe are most likely to present a material crisis on a global scale in 2024."

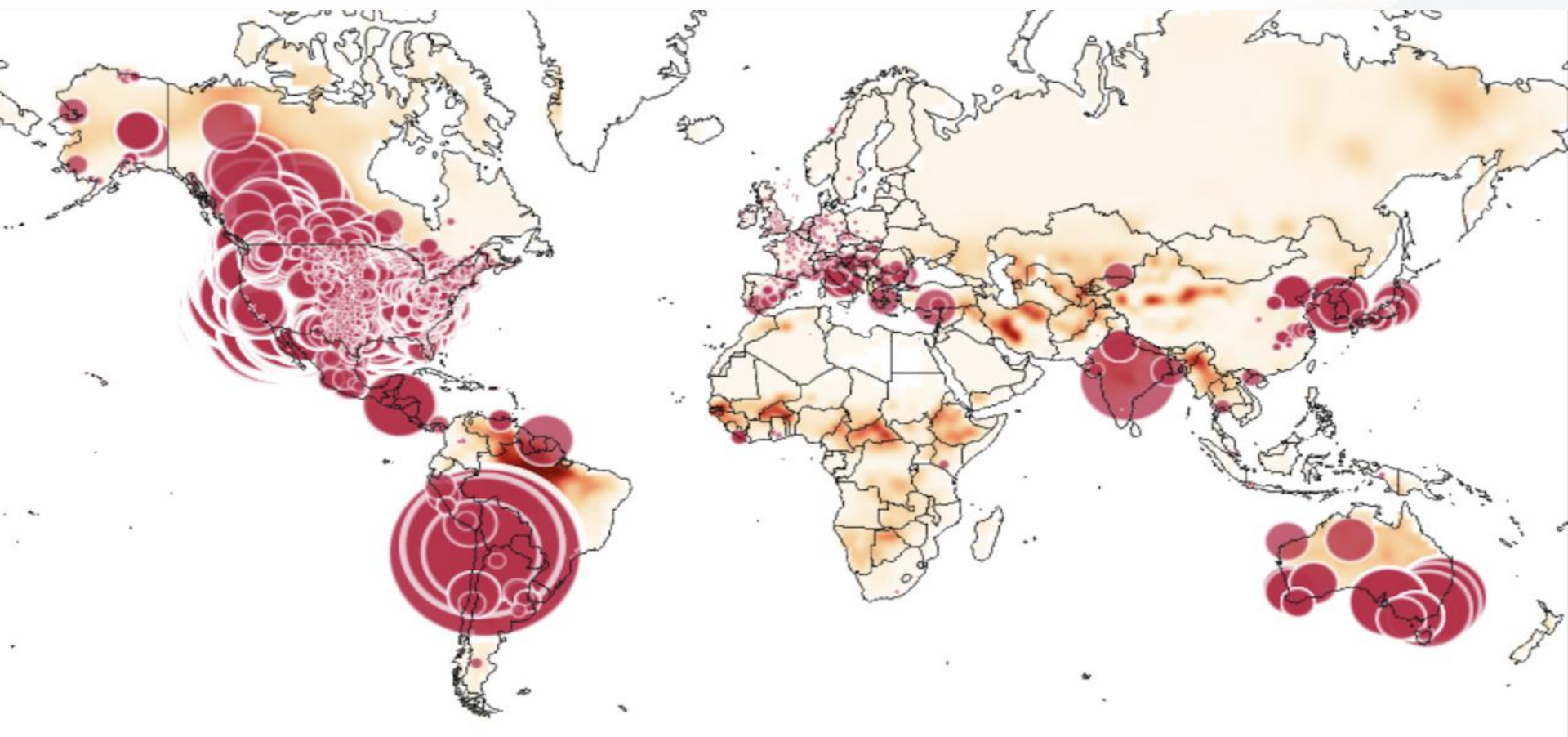


Source
World Economic Forum Global Risks
Perception Survey 2023-2024.



Source: Economist Impact

Parts of supply chain most impacted by climate change (Perception) – Economist Impact



S&P 500 UTILITIES SECTOR ASSETS OVERLAID WITH WILDFIRE RISK (2030-2050)

Syngenta Group in numbers



48,000
people



100+
countries



\$23 billion
in sales

#1
in Crop Protection

#3
in Seeds

#1
fertilizer and leading
farmer solutions
provider in China

New challenges ahead of us: **Global food production must increase**



BY 2050

9.7 billion
people

Even in scenarios where protein consumption is diversified, and food loss and waste is cut

Source: [UN](#), [WRI](#)

UNDRR - Corporate Chief Resilience Officers (CCRO) network

Chief Resilience Officers

- 10 large companies covering diverse sectors
- +1M workforce ; +USD300 bn in revenue; and +100 countries
- Thought leadership to help businesses reduce disaster risks

Actionable solutions

- Knowledge exchange and capacity building
- Resilience Maturity Assessment (ReMA)



The Resilience Maturity Assessment (ReMA): Built by Industry, for Industry

Why ReMA?

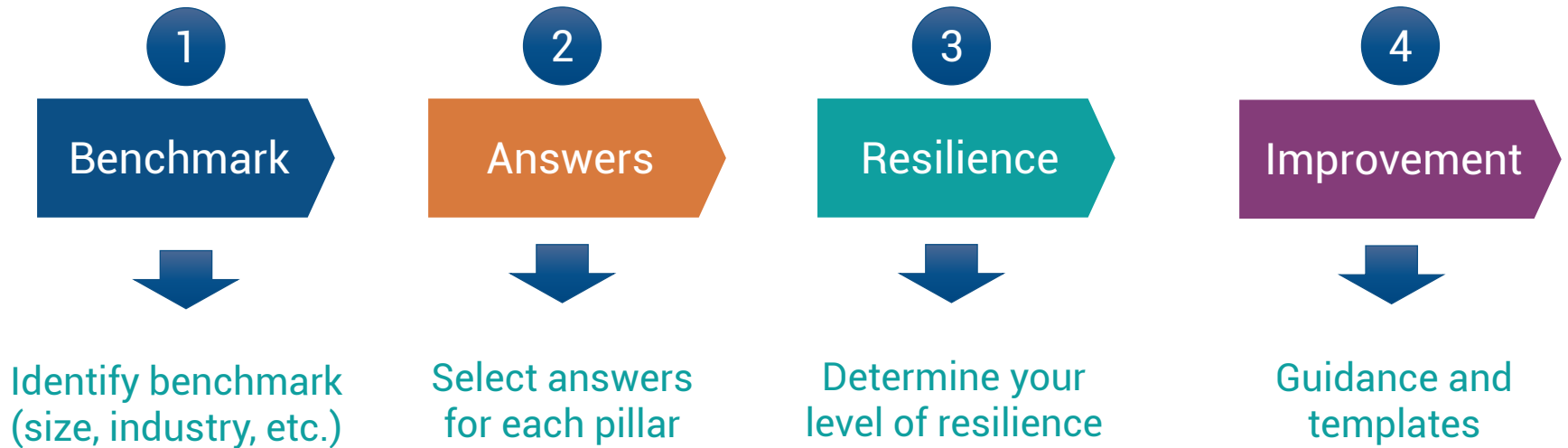


How was it built?



- **Unique in its class**, it blends strategic thinking with practical self-assessed benchmarking, for enterprises of any size, in any sector, globally
- **As business leaders, scale impact**: use the tool within your organizations and supply chains, share it with your networks, and help improve it

ReMA is a step-by-step framework for businesses of all sizes to measure and improve resilience



- The ability to adapt and grow amid challenges is beneficial for the enterprises themselves and the communities
- Take a step back and assess operational elements recurrent in resilience practices
- 43 templates distributed across pillars and levels

Resilience Maturity Assessment (ReMA) tool

UNDRR Resilience Maturity Assessment

Why enterprise resilience is important and how to assess it?

Resilience is vital for any enterprise to survive and thrive in a complex and volatile environment. This ability to adapt and grow amid challenges is not only beneficial for the enterprises them

So, where to start?

This maturity model can be applied to micro, small, medium, and large enterprises. Take a step back and assess six operational elements that are recurrent in resilience practices and can be

Then, build upon this assessment to implement suggested improvements adjusting to your specific context.

For more information on all levels of resilience and supporting materials, read the [Companion Guide here](#).

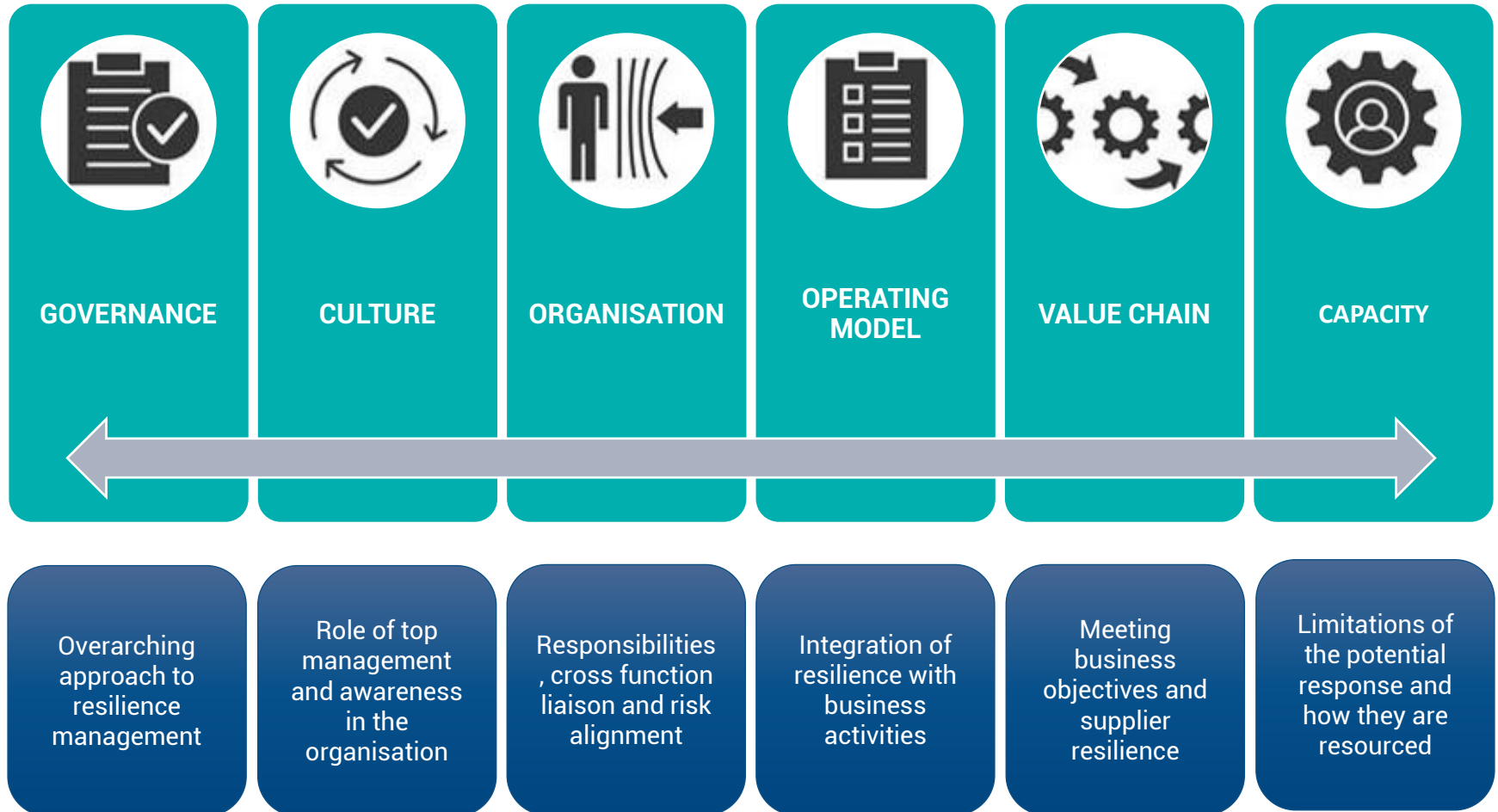
Name of person	<input type="text"/>	Size of Organisation *	<input type="text" value="---Select---"/>
Email of person	<input type="text"/>	Business Sector *	<input type="text" value="---Select---"/>
Name of Organisation	<input type="text"/>	Which hazards most concern your organization?	<input type="text"/>
Country where the organization is located *	<input type="text" value="---Select---"/>		

For each pillar, please select the statements that best describe your organization.

LIVE DEMONSTRATION



The REMA tool uses **six operational pillars** that are recurrent in **resilience practices** to assess maturity



For each pillar, ReMA offers 4 maturity levels

L1 - Baseline

Occasional, informal resilience practices, often in a reactive and/or ad hoc manner

No, or little structure and no consistency over time

L2 - Adaptive

Actively working to implement in a structured manner, with plan in place

Basic architecture, standards and principles identified

Actions are documented and executed with the goal of being repeatable, some reporting

L3 - Evolved

Implemented in a formal, structured and documented manner, with common processes, standards and guiding principles

Regular reporting which informs operational decision making, and escalation procedures defined.

Well understood and accepted by key internal and external stakeholders

L4 - Optimised

Applied in a manner that delivers continuous improvement, capacity to apply innovative/creative approaches,

Widespread understanding of importance. Includes all key internal stakeholders' performance evaluation

What's next?

- **Scale impact of the Resilience Maturity Assessment (ReMA) tool**
 - Use the tool within your organization and supply chains
 - Share it with your networks and partners
 - Contribute insights to evolve the tool further
- **Benefit from knowledge exchange and capacity building**
- **Contact UNDRR and the CCRO network**
(erick.gonzalesrocha@un.org)

undrr.org

Q & A

Thank you !!!